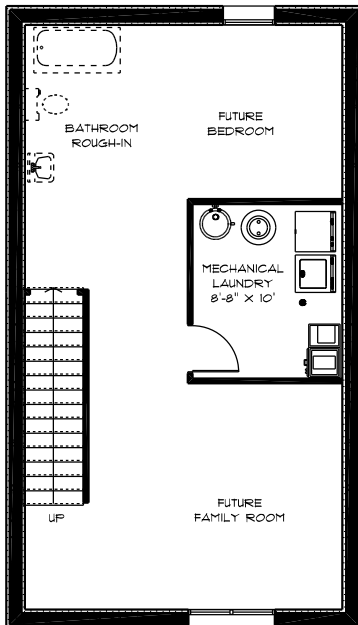


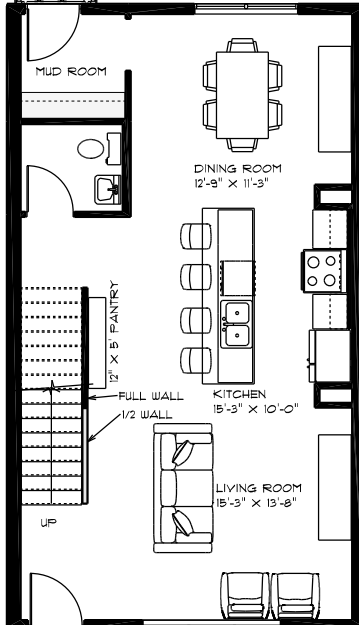
10 GROVE BAY  
1,440 SQ/FT

MAIN FLOOR 720 SQ/FT  
2ND FLOOR 720 SQ/FT  
BASEMENT 720 SQ/FT

GARAGE 264 SQ/FT

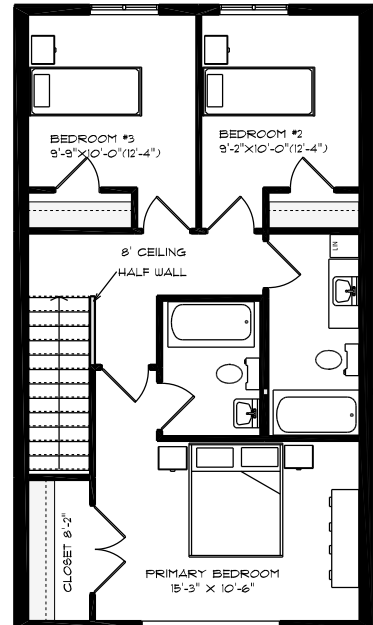


UNFINISHED  
BASEMENT 720 SQ/FT



CONCRETE STEPS METAL RAIL

MAIN FLOOR  
720 SQ/FT



2ND FLOOR  
720 SQ/FT